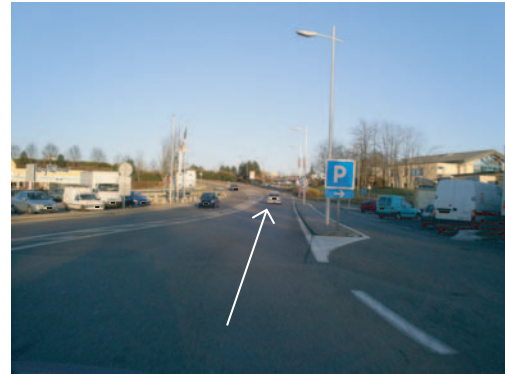


Arrival by car from Lyon or Mulhouse/Bale (highway A36)  
A36 - ETAPHOTEL (5, Avenue Maréchal Foch)  
Free Parking near Etaphotel

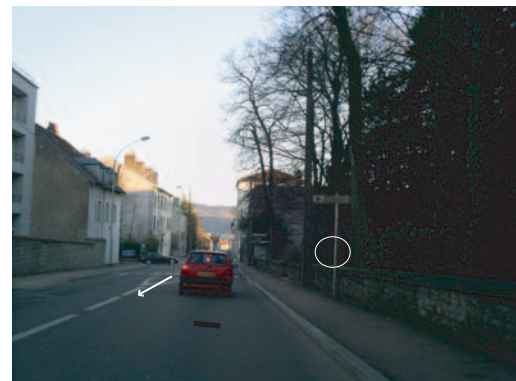


- Take exit 4 direction Besançon/Saint Claude.
- The first roundabout- straight ahead.



- The second roundabout- second exit, direction Besançon/Saint Claude.
- On the expressway take exit, direction Besançon Lausanne.

- Enter Besançon.
- Roundabout- take the third exit, direction Besançon centre/Saint Claude.
- Roundabout- take the second exit (straight ahead), direction Montbéliard.
- Before the first light, take the right side and go straight ahead, direction Montbéliard.
- The second light, go straight ahead.
- The third light, turn to right and go straight ahead, direction city centre (centre ville).
- Follow direction Pontarlier Lausanne by turning to left under the bridge.



- Place yourselves on the extreme right way, to turn to right at the light.
- After the light, turn to right on the Battant Parking.

